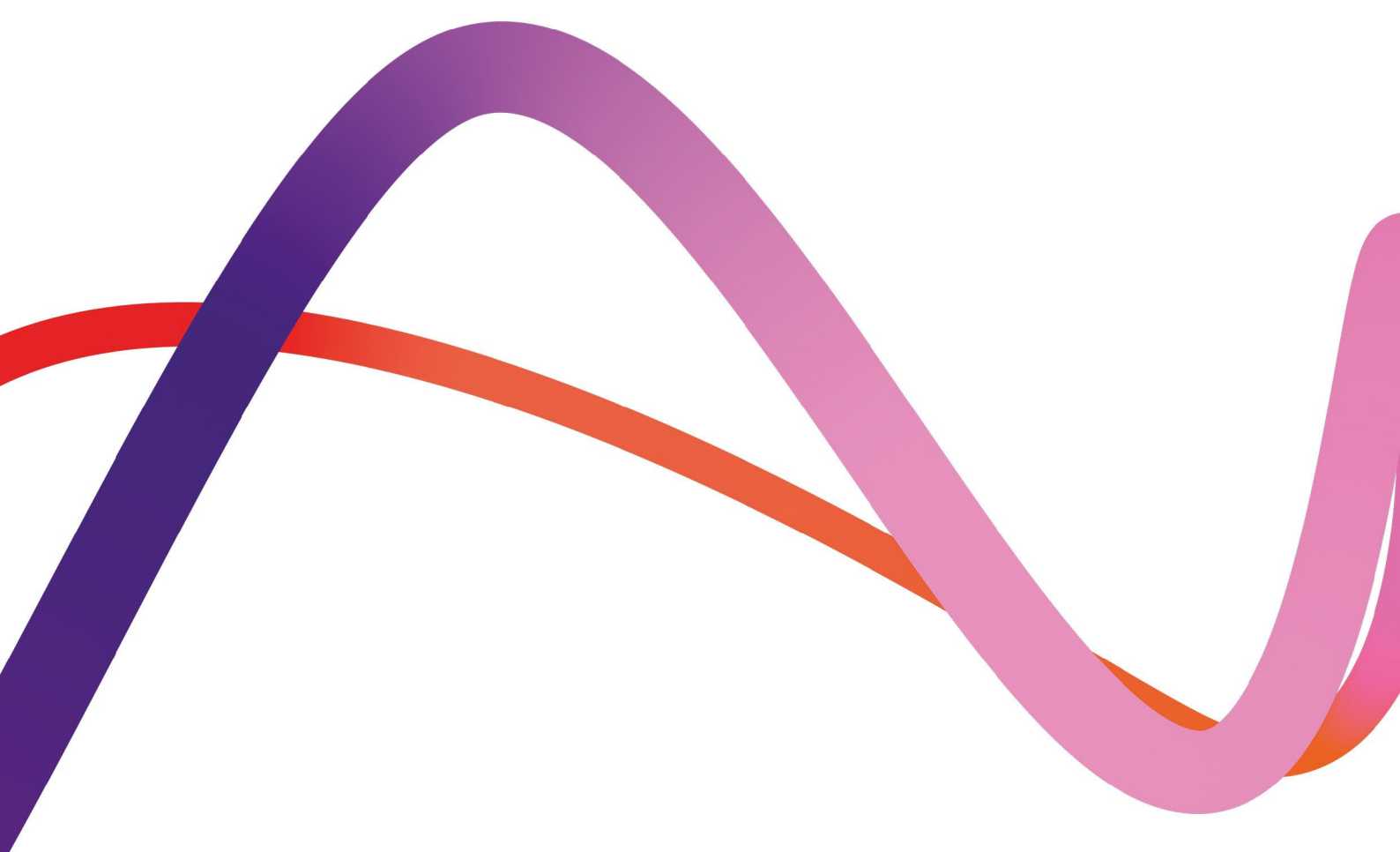


Medworth Energy from Waste Combined Heat and Power Facility



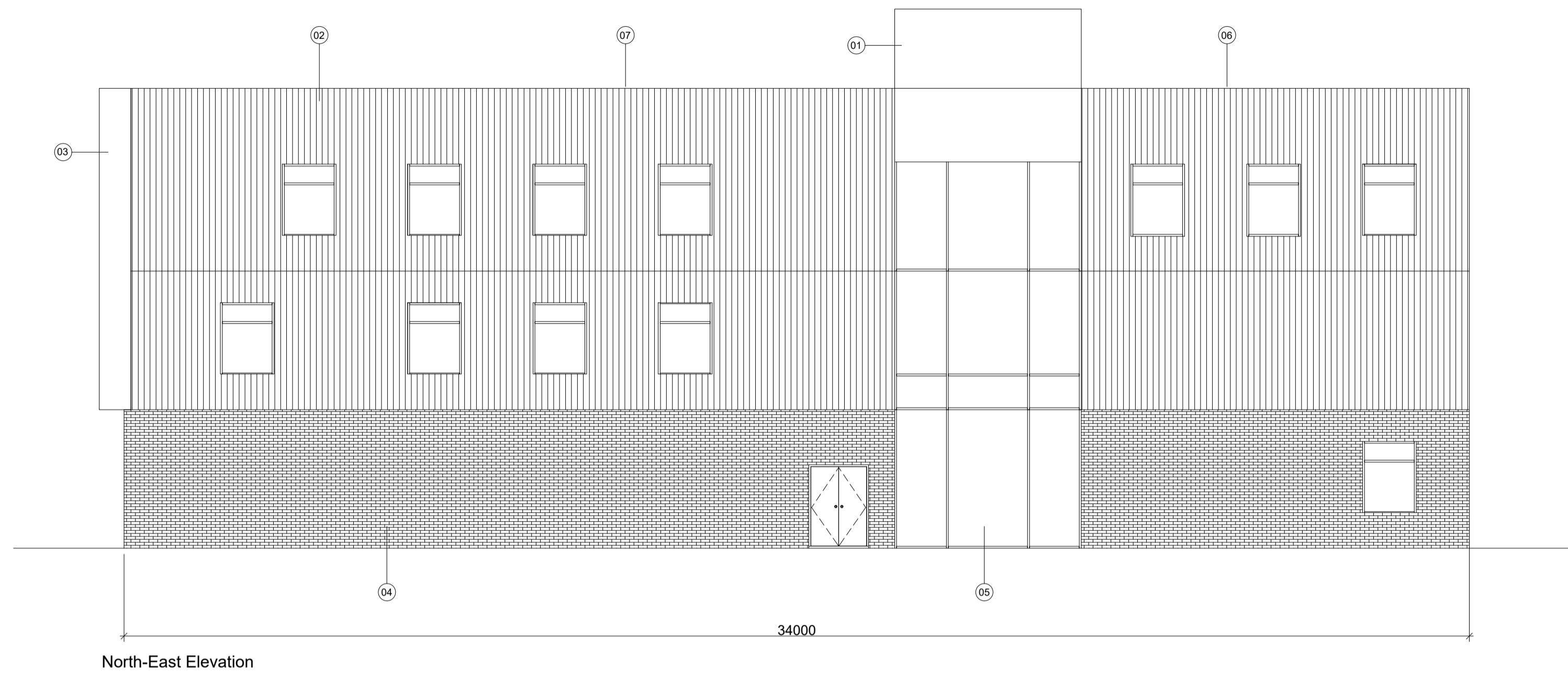
PINS ref. EN010110
Document Reference: Vol 2.8
Revision 1.0
June 2022



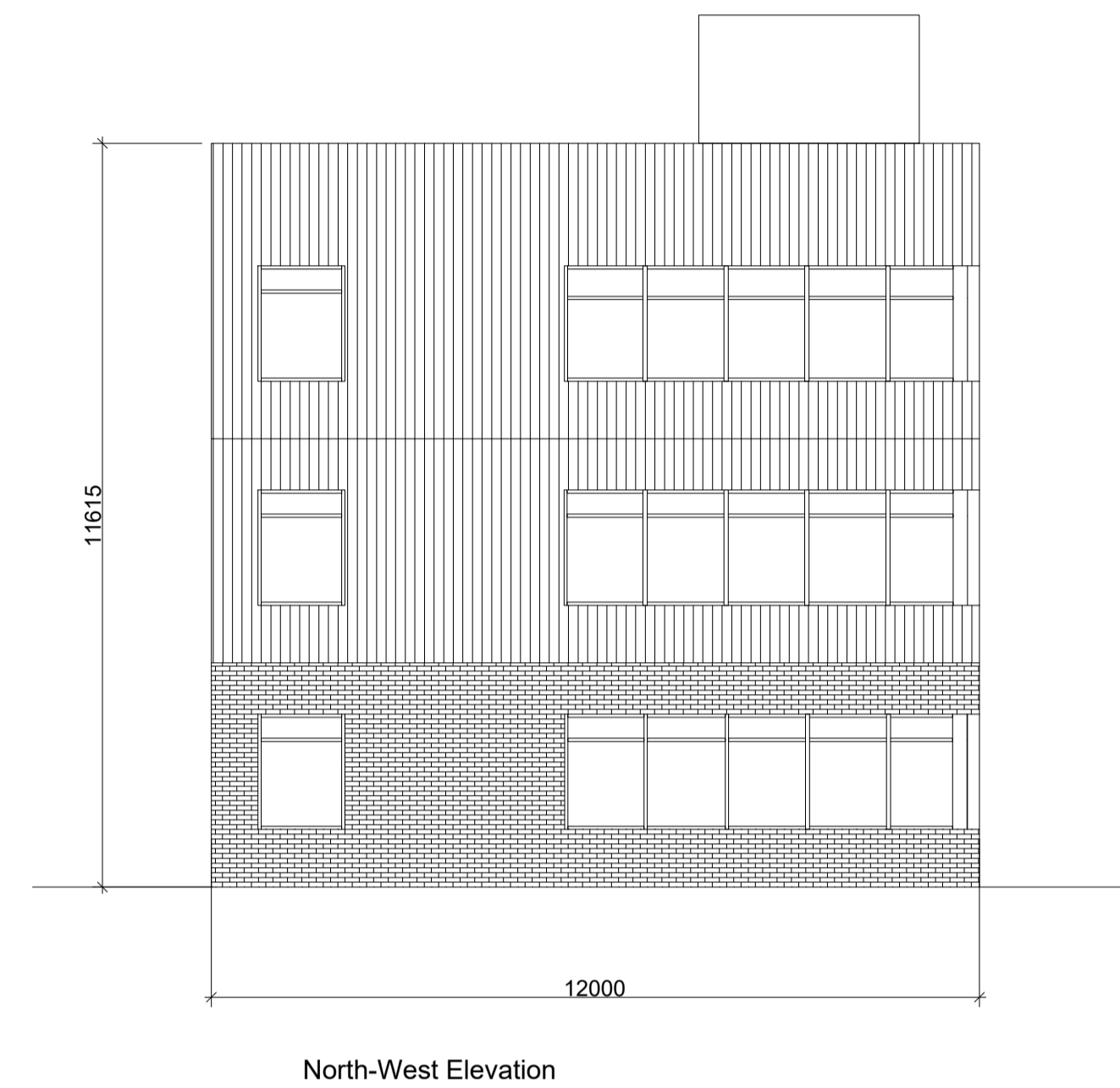
Administration Building Elevations

Regulation reference: The Infrastructure
Planning (Applications: Prescribed Forms
and Procedure) Regulations 2009
Regulation 5(2)(o)

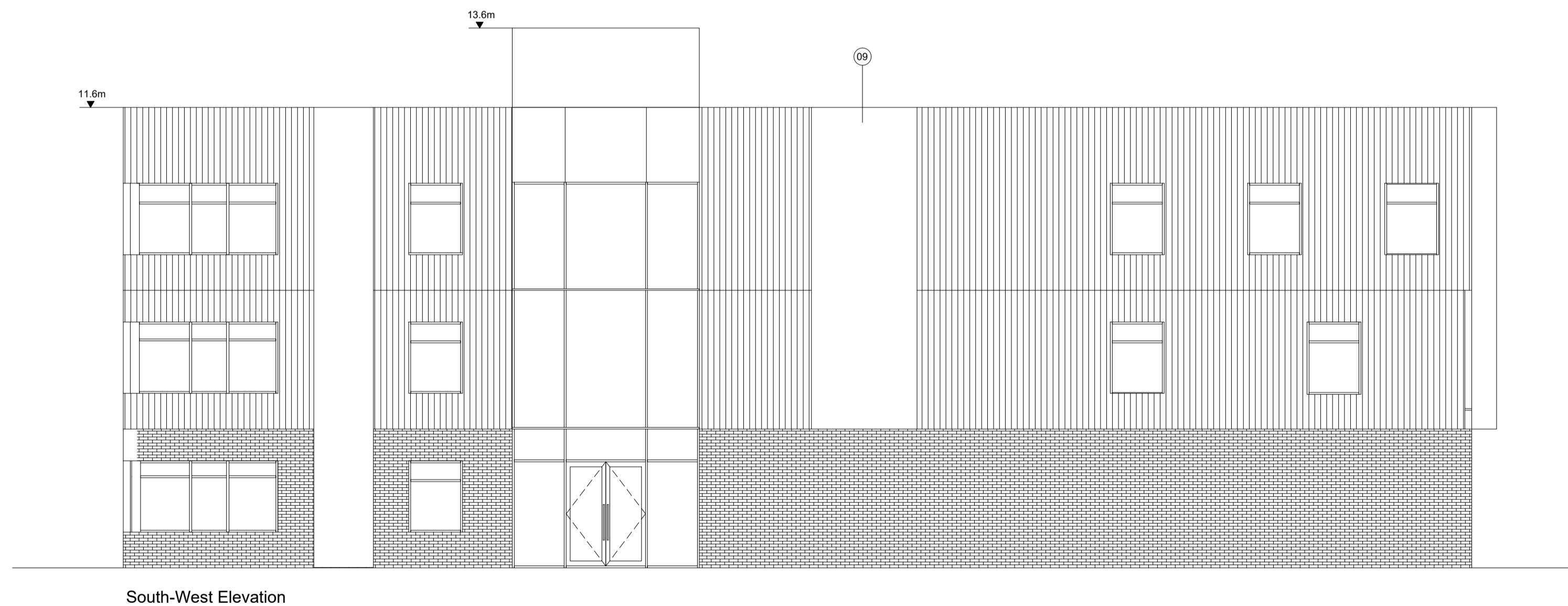
**We inspire
with energy.**



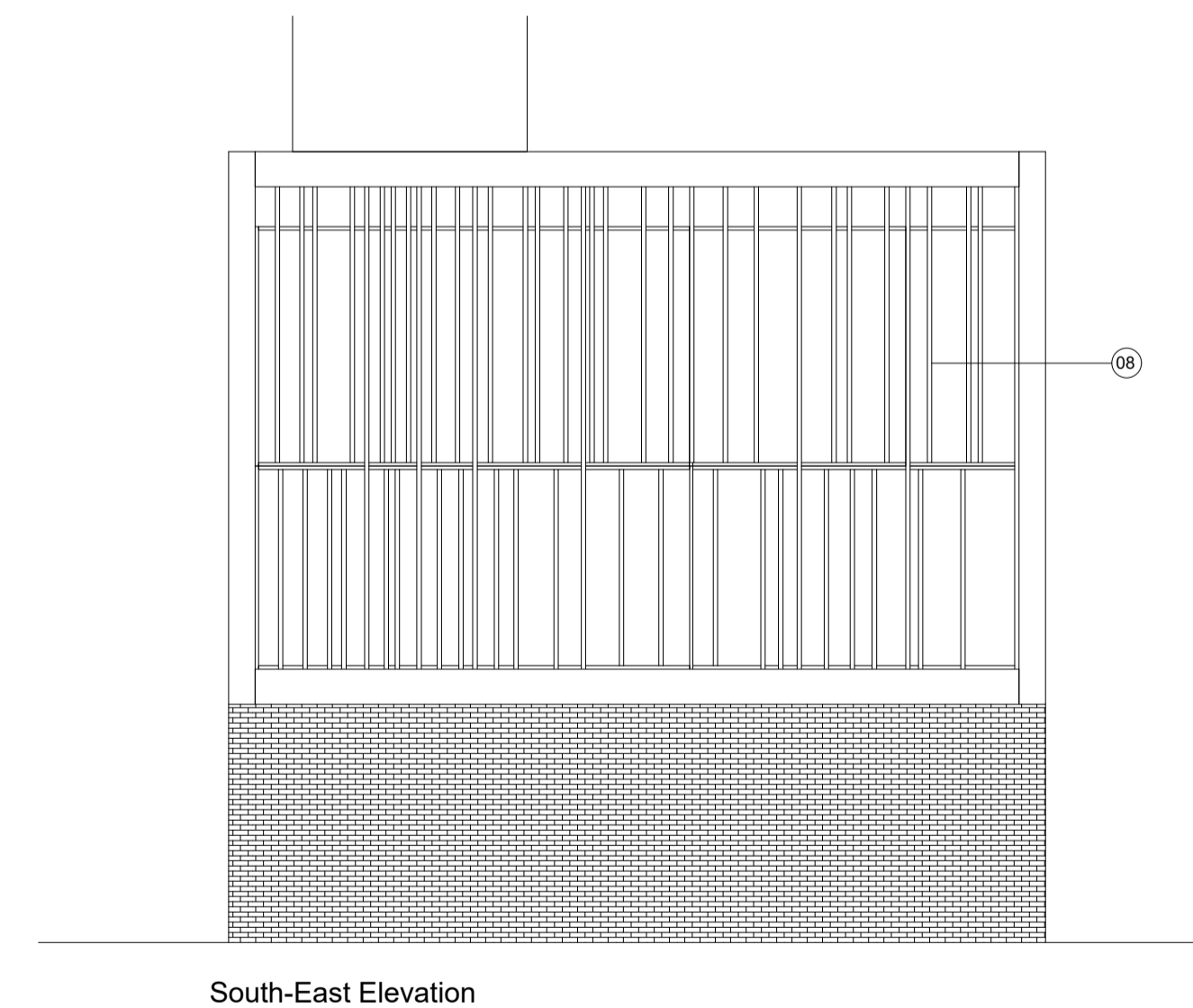
North-East Elevation



North-West Elevation



South-West Elevation



South-East Elevation

Key

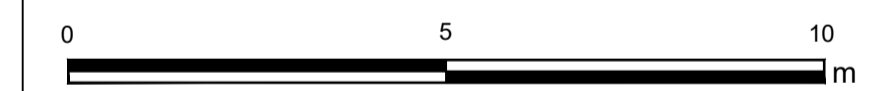
- Key to materials:
- 01 Stairs to access the roof - grey composite cladding
 - 02 Accoya Timber Cladding
 - 03 Timber Frame
 - 04 Brickwork
 - 05 Aluminium frame and curtain glazing
 - 06 Brown roof with PV panels and plant room behind parapet wall
 - 07 Brown roof
 - 08 Timber Brise Soleil
 - 09 Green living wall with timber detail

Final selection of external materials to be agreed with the relevant local planning authority.

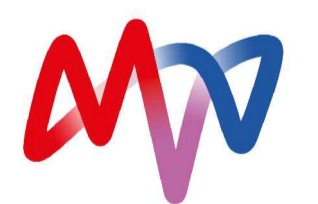
Notes

Page Size: A1 Scale: 1:100

Coordinate System: British National Grid
 Projection: Transverse Mercator
 Centroid Easting: N/A
 Centroid Northing: N/A



COPYRIGHT INFO.



MEDWORTH CHP LIMITED
MEDWORTH ENERGY FROM WASTE COMBINED HEAT AND POWER FACILITY DCO
ADMINISTRATION BUILDING ELEVATIONS
APFP REGULATIONS: 5(2)(o)

SHEET 1 OF 1

ISSUE	DATE	COMMENTS	AUT'R	CHK'D	APP'D
A	JUNE 2022	DCO SUBMISSION	J.P.	D.K.	T.M.

This page is intentionally blank

